

# Treasures from the Sherman Room

*An Introduction to Brimfield History from the Library's Historical Collections*

*Issue No. 2*

## Brimfield PostCards

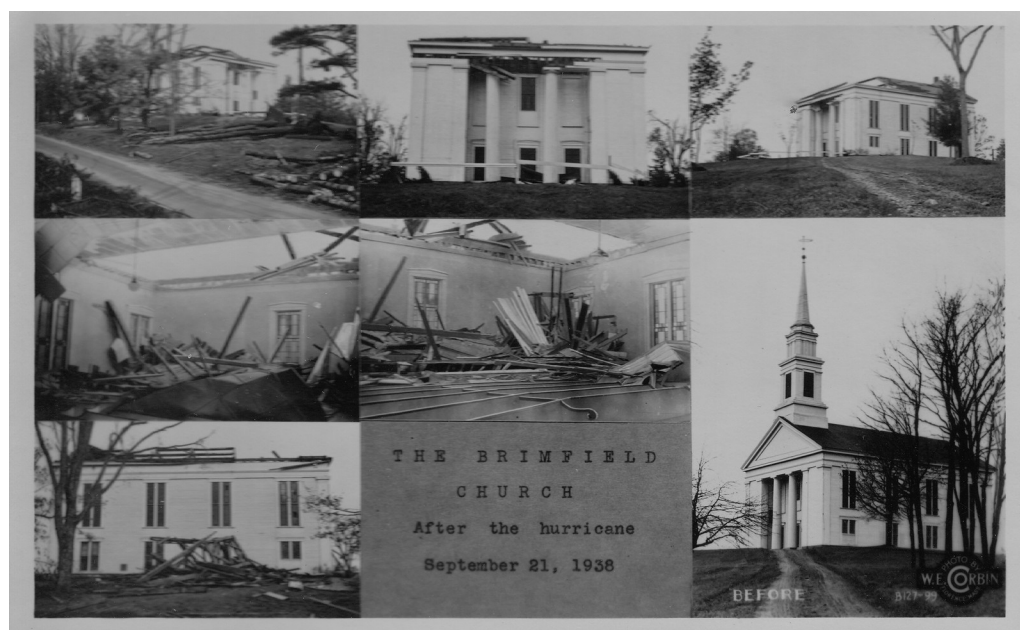
The Sherman Room has a huge collection of postcards representing many of the well-known buildings, monuments and landscapes in Brimfield. They provide a wonderful look back in time at a more rural community. This pamphlet, which highlights the Congregational Church, Hitchcock Academy, the Library and the Town Hall, is the first of several that will share the images from these vintage postcards.



First Congregational Church

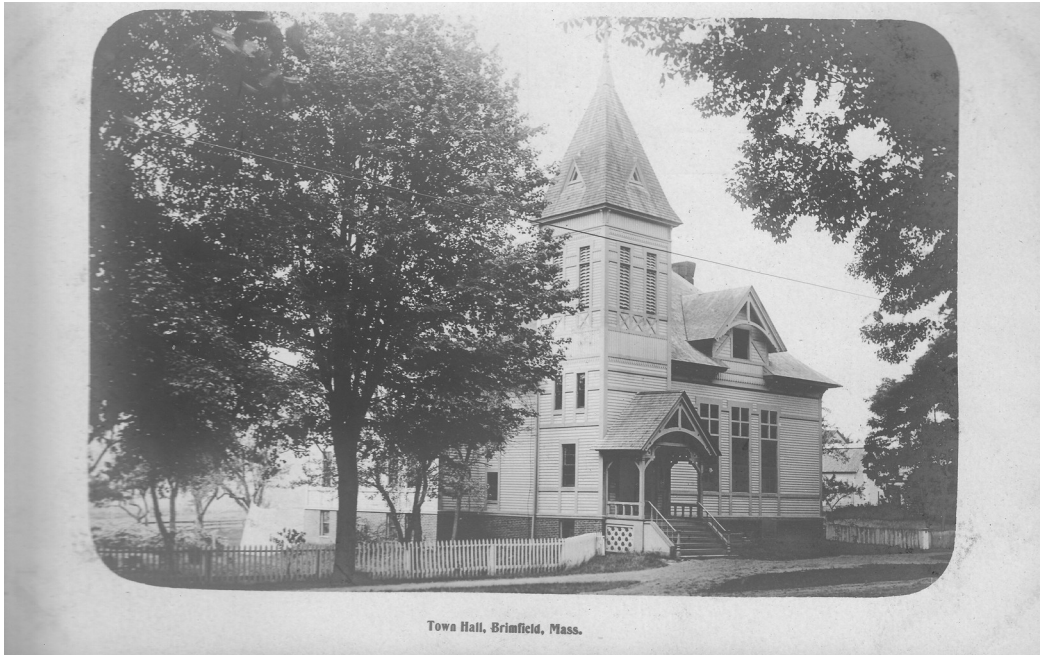


First Congregational Church  
(taken by moonlight after it was rebuilt following the 1938 hurricane)



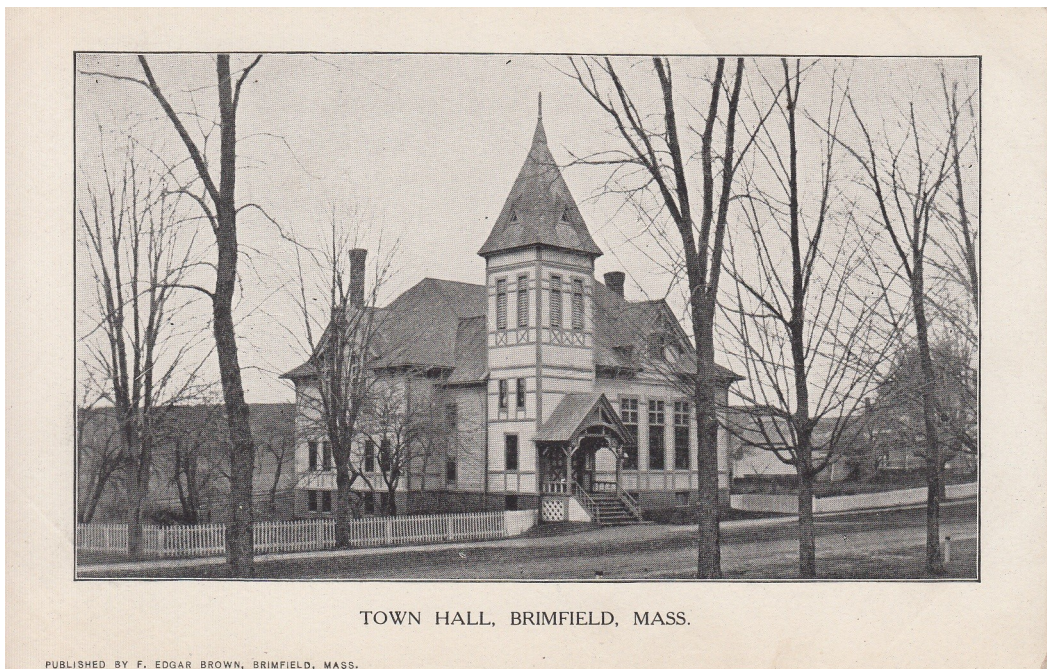
First Congregational Church (damages after the 1938 Hurricane)





Town Hall, Brimfield, Mass.

Brimfield Town Hall



TOWN HALL, BRIMFIELD, MASS.

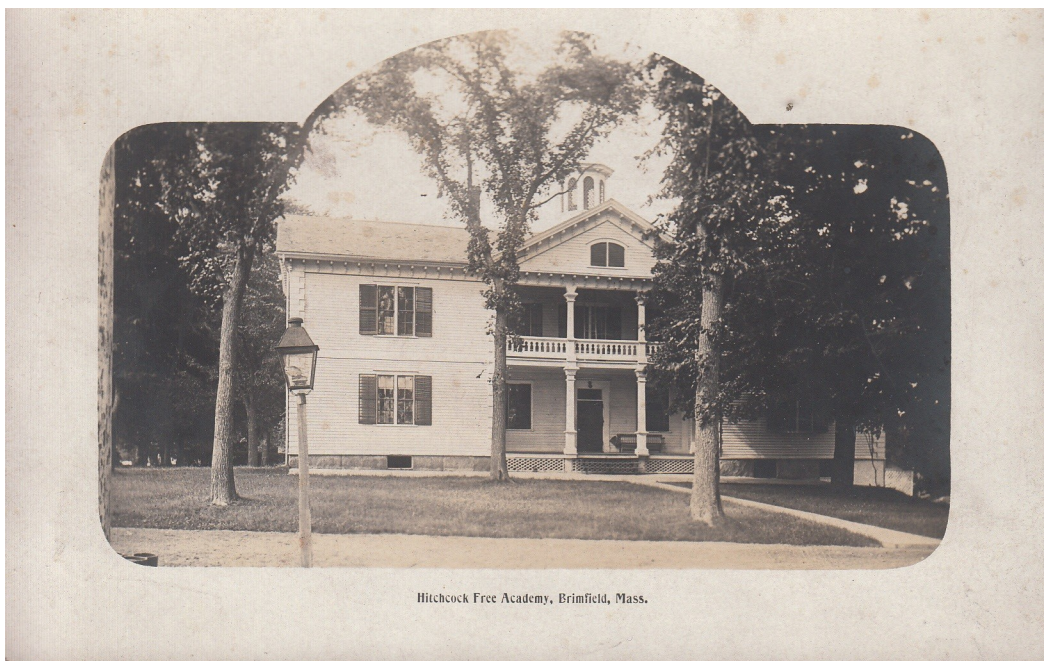
PUBLISHED BY F. EDGAR BROWN, BRIMFIELD, MASS.

Brimfield Town Hall





Hitchcock Academy



Hitchcock Free Academy





Hitchcock Free Academy (the fence in the foreground is from the Civil War monument)



Brimfield Hotel (the third and last hotel)





Brimfield Hotel (the third and last hotel)



Danielson-Lincoln Memorial Library



Interior of Danielson-Lincoln Memorial Library (currently children's book room)



Danielson-Lincoln Memorial Library Book Room